



**Flanders
Scientific
Inc.**

Colorimeter Offset Matrix Creation

I1 & CR250 using CalMAN

Flanders Scientific, Inc.
6215 Shiloh Crossing
Suite G
Alpharetta, GA 30005
Phone: +1.678.835.4934
Fax: +1.678.804.1882
E-Mail: Support@FlandersScientific.com
www.FlandersScientific.com

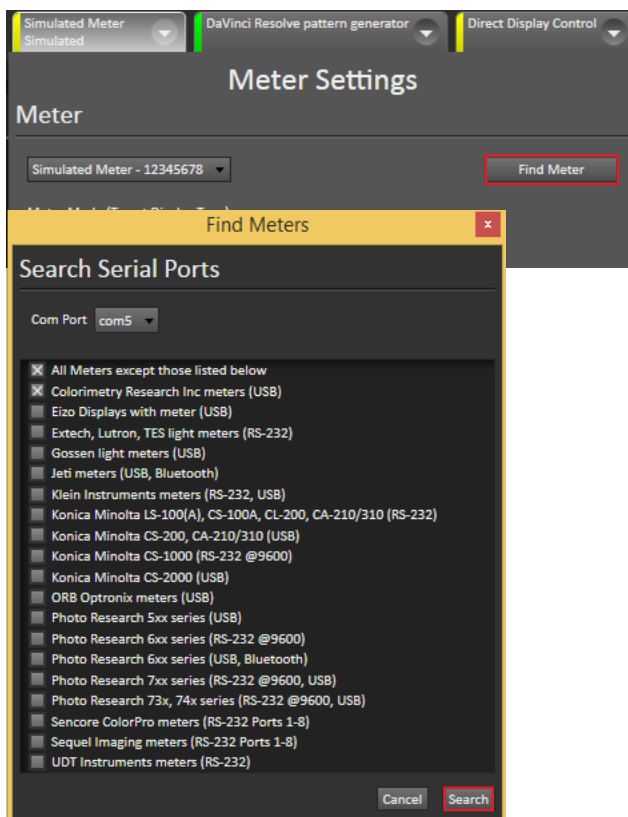
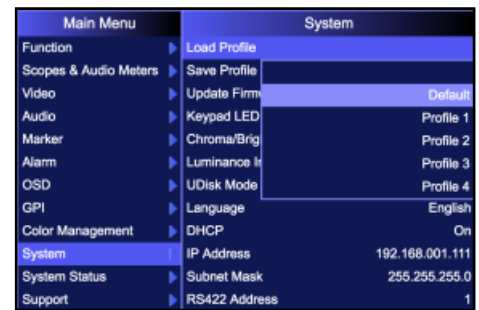
Begin by setting your FSI monitor to the default profile.
 Menu > System > Load Profile > Default.
 When prompted, confirm by selecting Yes.

Bypass the 3D LUT in the monitor's Color Management menu.
 Color Management > LUT Bypass > 3D LUT.

Connect CalMAN to the Test Pattern Generator of your choice.
 For additional information, please reference our other calibration guides.

Connect your I1 and CR-250 to your computer via USB.

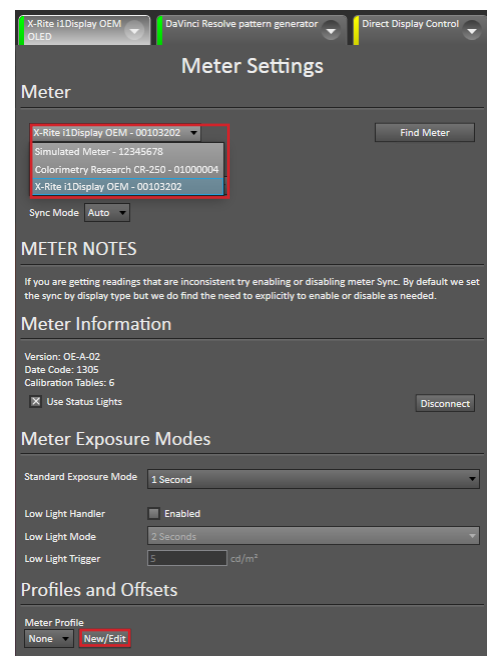
Ensure the diffusor is open on the I1



To Connect both probes, select the Simulated Meter tab and then Find Meter.

In the find meters window select the top two selections.
 All Meters except those listed below
 Colorimetry Research Inc. meters [USB]

Click search.



Select the I1 from the meter selection drop down.

Select New/Edit under profiles and offsets.

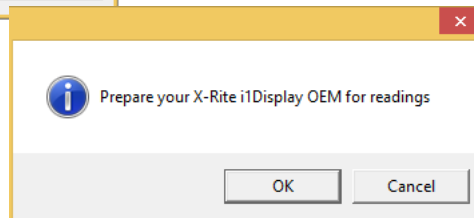
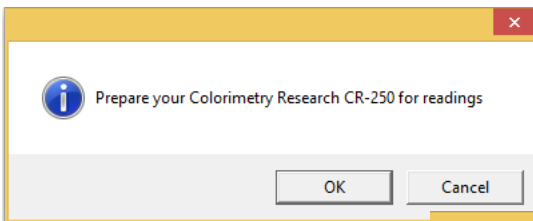
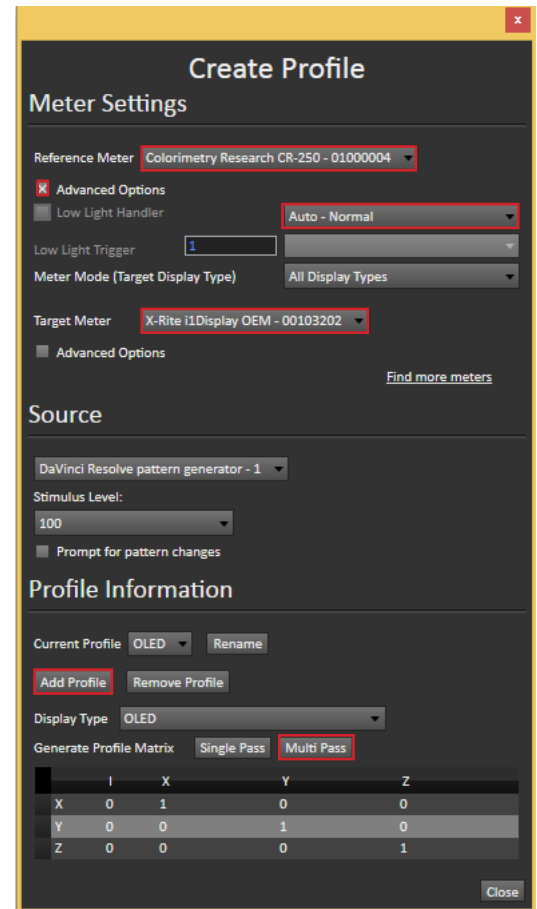
In the Create Profile window set:
Reference Meter: CR-250
Target Meter: I1

Select the Advanced Options checkbox under the CR-250 and set sync to Auto-Normal.

Select Add Profile and enter a name of your choice.

We recommend naming your offset based on the panel type or FSI monitor model. Set the display type that corresponds to your monitor.

Select multipass and hit OK once the CR-250 has been placed in the middle of the panel. Once complete, CalMAN will prompt you to do the same thing with the I1.



The profile will be saved on the computer and selectable from the meter profile drop down in the Meter Settings tab under Profiles and Offsets.

