



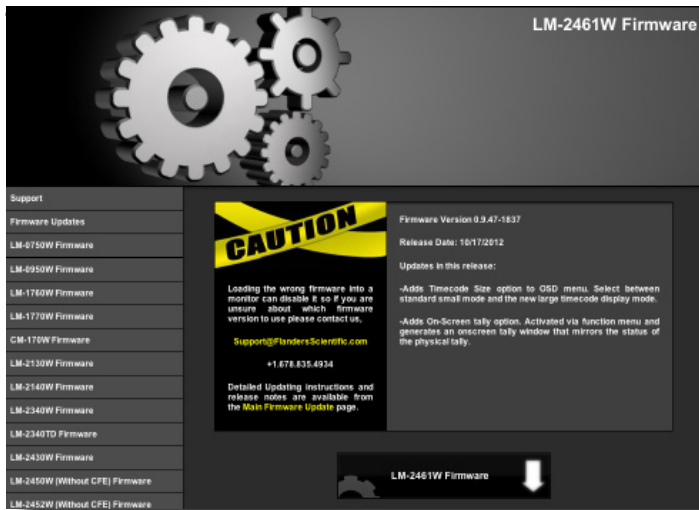
**Flanders  
Scientific  
Inc.**

## **Firmware Update Instructions: PC**

---

ver.3.0

Flanders Scientific, Inc.  
6215 Shiloh Crossing  
Suite G  
Alpharetta, GA 30005  
Phone: +1.678.835.4934  
Fax: +1.678.804.1882  
E-Mail: [Support@FlandersScientific.com](mailto:Support@FlandersScientific.com)  
[www.FlandersScientific.com](http://www.FlandersScientific.com)

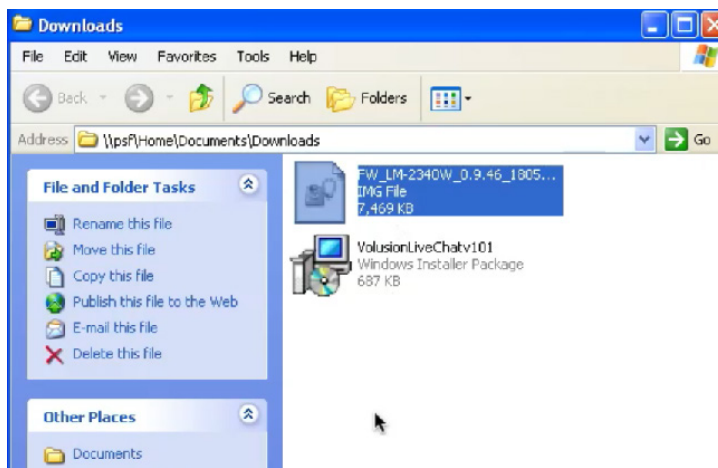


1. Download the latest firmware from the Update Page ([www.FlandersScientific.com/index/Firmware\\_Updates](http://www.FlandersScientific.com/index/Firmware_Updates)).

Select your monitor model on the left side bar and then click on the download link.

A verification box will appear with a warning about downloading the appropriate firmware for your model.

Once you verify that you are downloading the correct firmware file Click on the download link to begin your download.

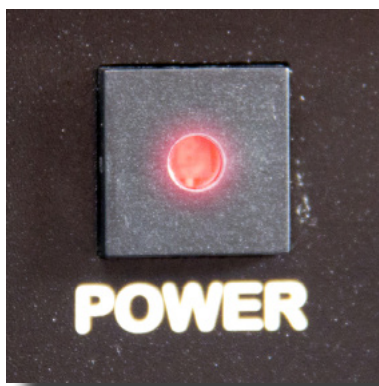


2. Your downloaded file will be shown in the Downloads Window on your computer.

The Download will be a disk image file. DO NOT unzip this .img file on the computer.

**If you are currently running Firmware Version 9.53-1907 or later please verify that the UDisk option found on the monitor's System Menu is set to ON and then skip to step 7. If you are currently running firmware older than 9.53-1907 please proceed to step 3.**

3

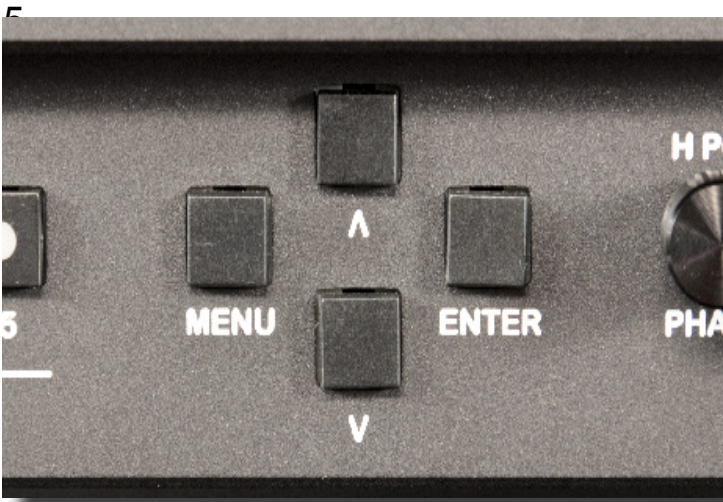


3. Next turn the monitor off from the keypad by pressing the power button, but keep the monitor plugged in.



4. With the monitor OFF plug the provided update cable (RJ-45 to USB) into the monitor's GPI Port.

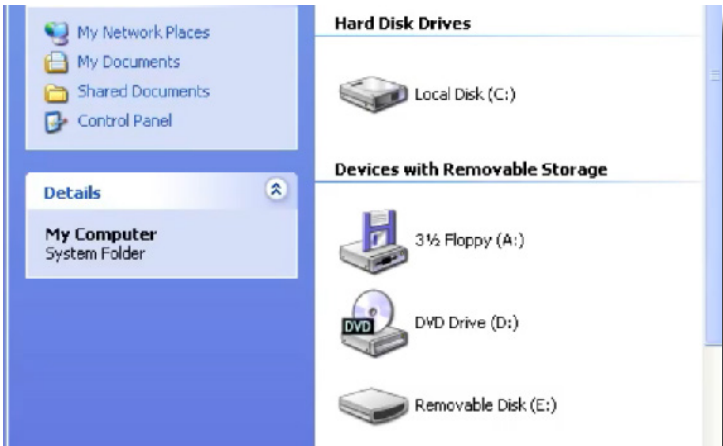
DO NOT plug the cable into your computer until you have completed Step 5.



5. With the monitor plugged in, but still in the OFF position, place the monitor in update mode by pressing the follow keypad combination on the monitor:  
MENU, ENTER, UP, DOWN, MENU, ENTER, UP, DOWN, MENU, DOWN, POWER.

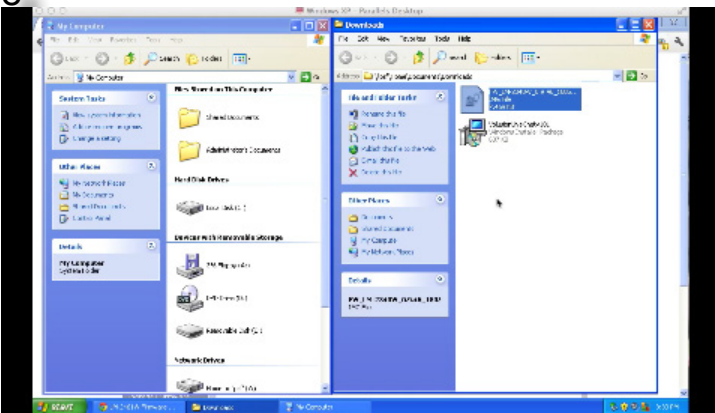
6. The monitor has successfully entered update mode if the Green Tally comes on followed by the Amber Tally. You can also verify that the monitor is in update mode by going to the display alignment menu and seeing if the update firmware option is still grayed out. If it is still grayed out you have not successfully entered update mode.

**DO NOT** select the Update Firmware option on the Monitor at this point, you must first transfer the firmware file to the monitor from your computer.



7. Plug the update cable (RJ-45 to USB) into a USB Port on your computer. It may take a few moments for the computer to recognize your monitor as a USB Mass Storage Device so please be patient. Once recognized the monitor will appear in the explorer window as an attached drive.

8

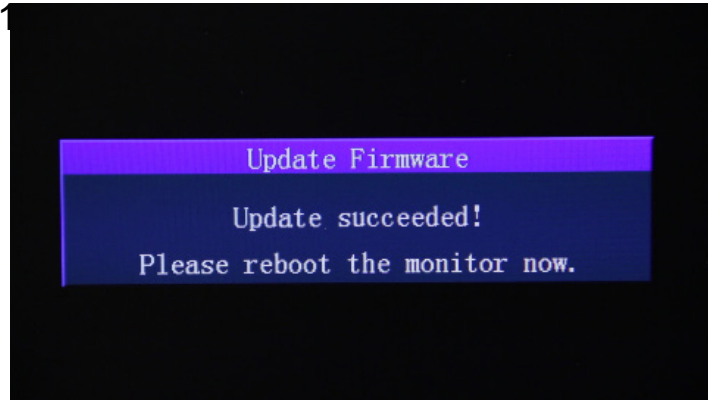


8. Next, simply copy and paste or drag and drop the .img file from your downloads folder to the mass storage device icon.



9. After the computer has finished copying the entire firmware file to the monitor's memory go the monitor's Display Alignment Menu and select the Update Firmware Option.

After you select the firmware update option a dialog box will appear for confirmation that you want to update the firmware. Select “yes”.



10. When you receive an onscreen indication that the update is complete reboot the monitor to complete your firmware update.