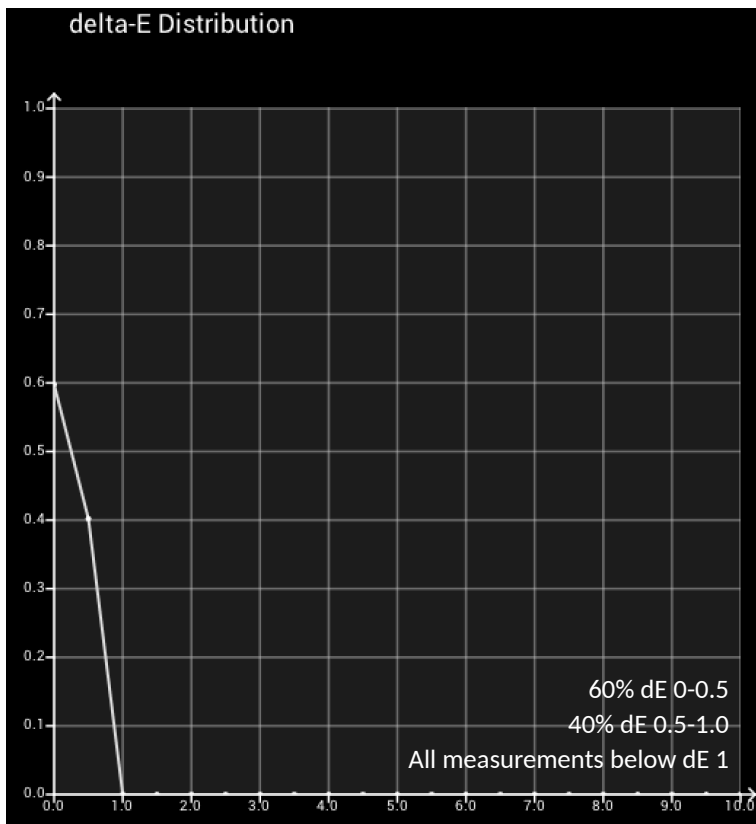
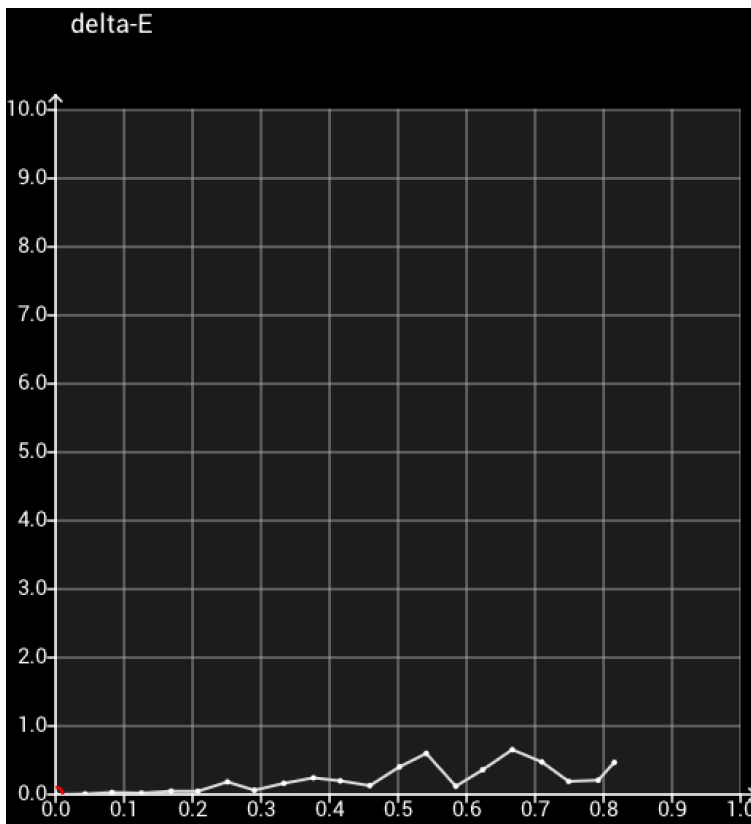


XMP550 Direct Connect Volumetric AutoCal Verification

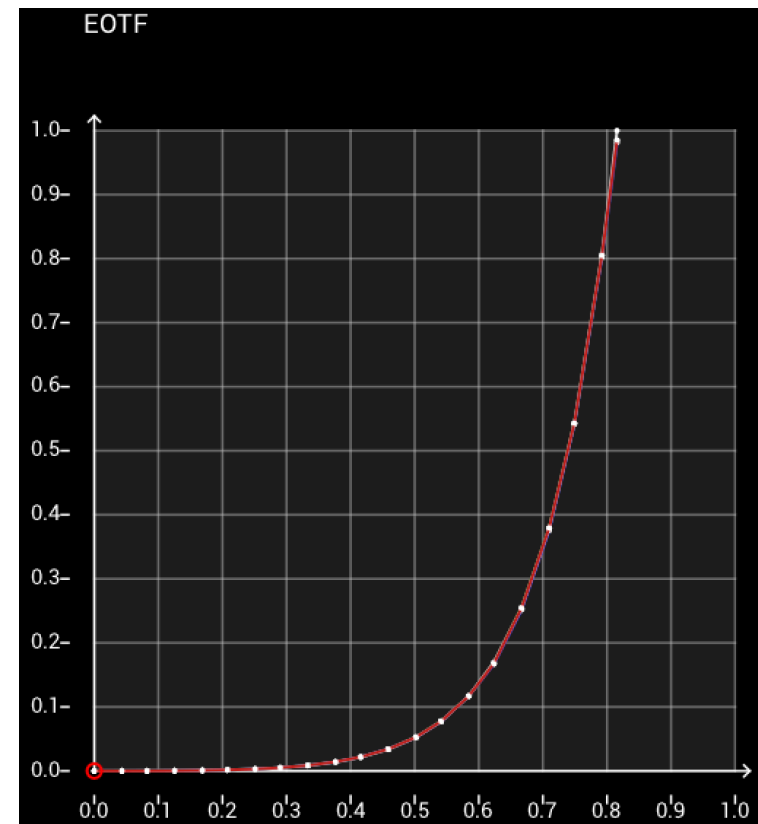
dE Distribution



Greyscale dE



PQ EOTF Tracking



Profile Points: 1000

dE < 1.0 : 1000 (100%)

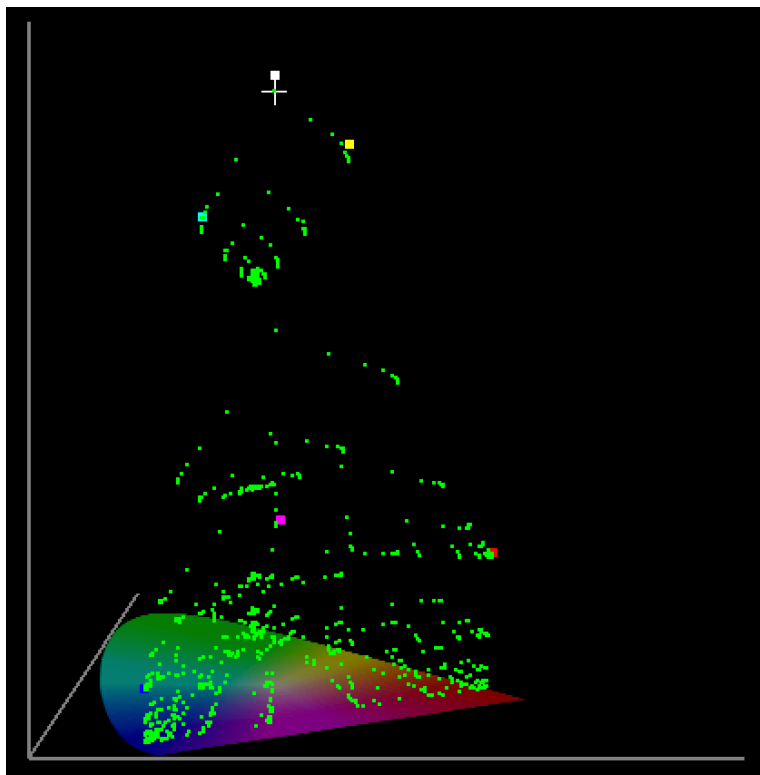
dE > 1 < 2.3: 0 (0.00%)

dE > 2.3: 0 (0.00%)

All graphs represent measured verification data of an XMP550 calibrated with a CR100 using Direct Connect Volumetric AutoCal. dE Distribution results were obtained with a 1,000pt cube based analysis of the AutoCal result using L20 patch size in LightIllusion's ColourSpace using the same CR100 that was used for AutoCal. Grey Scale and PQ EOTF results shown were taken with a separate grey ramp analysis in ColourSpace to provide more greyscale data points.

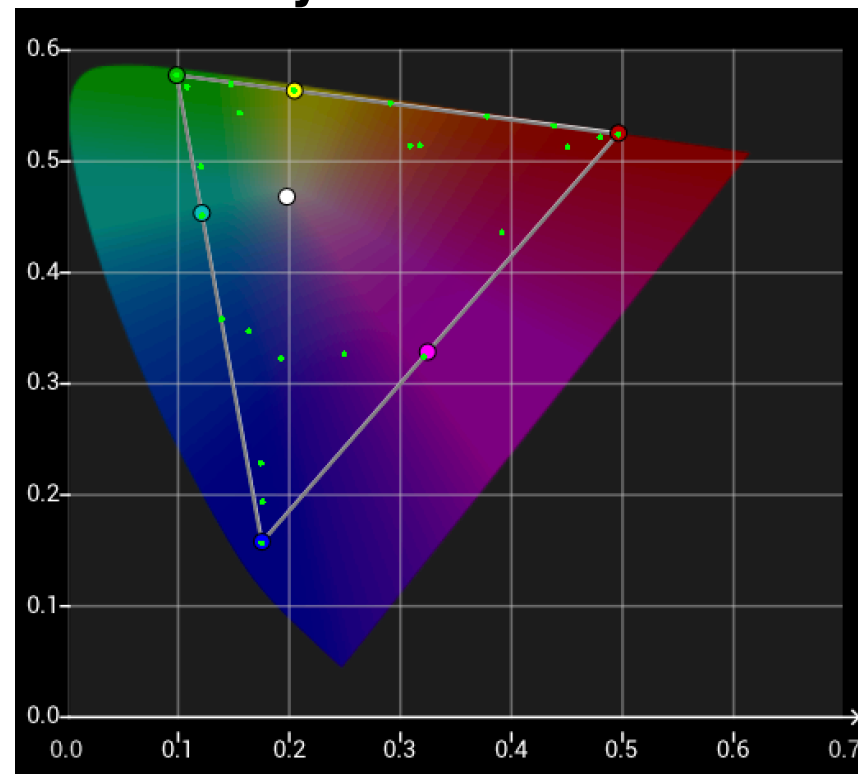
XMP550 Direct Connect Volumetric AutoCal Verification

Volumetric View



Volumetric x,y,Y view of P3 D65 PQ verification where measured points with corresponding dE2000 value below 1.0 are shown as green dots. All 1,000 measured patches in this test scenario were below 1.0. If any points were higher than dE2000 of 1.0 they would be shown as orange or red instead of green. Results were obtained with a 1,000pt cube based analysis of the AutoCal result using L20 patch size in LightIllusion's ColourSpace using the same CR100 that was used for AutoCal.

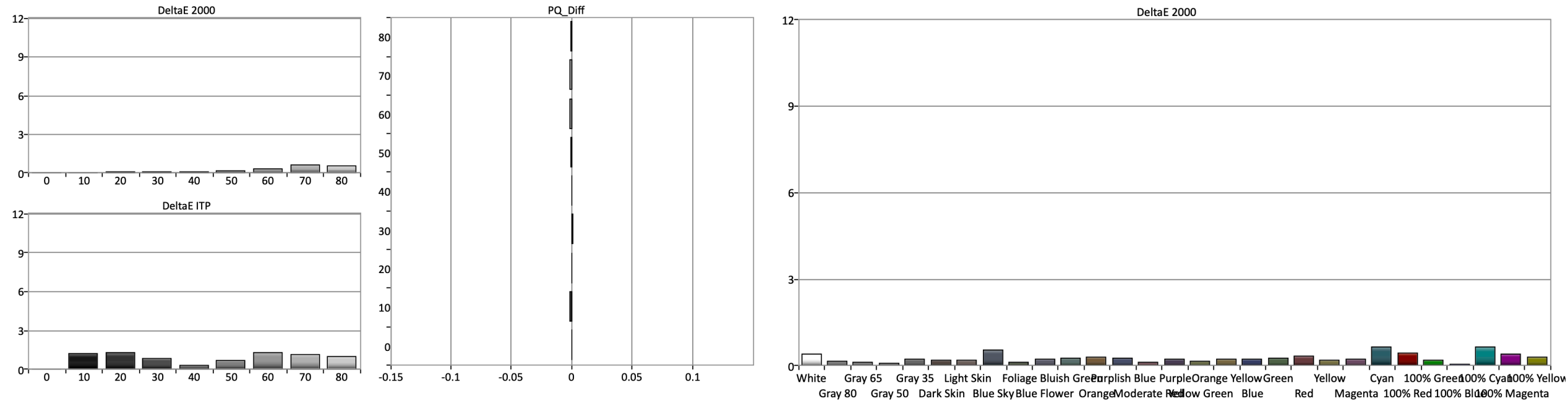
Memory Colors & Gamut



This graph is a separate analysis specifically showing color gamut and select memory colors. This data illustrates the performance of the P3, 6500K, PQ EOTF selection, but other gamut, CCT, and EOTF selections may be made from the monitor's menu without requiring recalibration of the display.

XMP550 Direct Connect Volumetric AutoCal Verification

Grayscale:



All graphs represent measured verification data of an XMP550 calibrated with a CR100 using Direct Connect Volumetric AutoCal. The verification data shown on this page was obtained using Portrait Display's Calman Studio. Grayscale results shown at left are of the same measured data represented in both dE2000 and the more stringent dEITP metric. The data at right of this page reflects a Calman Color Checker Analysis including 100% saturation values of the XMP550's AutoCal result. As with the previous page this data illustrates the performance of the P3, 6500K, PQ EOTF selection, but other gamut, CCT, and EOTF selections may be made from the monitor's menu without requiring recalibration of the display.